



NATA LIGHTING CO.,LTD.  
www.nata.cn  
Email:info@nata.com  
Tel:+86-750-3770000 Fax:+86-750-3771111  
Address:380JinOu Road,GaoXin Zone,Jiang Men City,Guangdong,China

NT

Client:

LumCAT: 2-2683-L

Luminaire: 92.70.411.00

Report No: 2024330-B012

Ballast type: AC

Test No: 2024330-C012

Voltage(V): 34.070

LampCAT: LUMILEDS LUXEON 1208

Current(A): 0.576

Lamp flux(lm): 2850.0

Power (W): 19.624

Number of Lamps: 1

PF: 0.000

Length(mm): 0

Width(mm): 0

Phm Type: C

Height(mm): 0

### Photometric Results

Lumens(lm): 2448.19, Efficiency(%): 85.90% , Luminous Efficacy(lm/W): 124.76

Central intensity(cd): 8305.426, Maximum intensity(cd): 8305.426

Angle of maximum intensity: C=0.0  $\gamma$ =0.0

Beam Angle(50%Imax): [C0/180]Total=24.8

[C90/270]Total=24.8

Field angle(10%Imax): [C0/180]Total=59.6

[C90/270]Total=59.6

Maximum s/h(1/2): C0\_180=0.42 C90\_270=0.42

Maximum s/h(1/4): C0\_180=0.45 C90\_270=0.45

Up flux rate of lamp(%): 0.00%

Down flux rate of lamp(%): 85.90%

Up flux rate of LUM(%): - -

Down flux rate of LUM(%): 100.00%

CIE Type : Direct lighting

Output flux ratio in  $\pi$  solid angle : 98.038%

Equipment: GMS1980  
Temperature(°C): 25.0

Date: 2024/3/30  
Humidity(%): 60.0%

Operator: NT07  
Distance(m): 7.65

$\gamma(^{\circ})$	Average I(cd)	Zonal F(lm)	Sum F(lm)	Eff Flux(%)	Eff Sum(%)
0.0	8305.425	0.000	0	0.00%	0.00%
1.0	8267.825	7.930	7.93	0.28%	0.32%
2.0	8161.533	23.581	31.511	0.83%	1.29%
3.0	7987.868	38.624	70.135	1.36%	2.86%
4.0	7721.225	52.583	122.718	1.85%	5.01%
5.0	7422.833	65.149	187.867	2.29%	7.67%
6.0	7028.464	75.945	263.813	2.66%	10.78%
7.0	6624.586	84.744	348.557	2.97%	14.24%
8.0	6170.159	91.570	440.127	3.21%	17.98%
9.0	5683.252	96.065	536.192	3.37%	21.90%
10.0	5231.238	98.772	634.964	3.47%	25.94%
11.0	4762.254	99.856	734.82	3.50%	30.01%
12.0	4338.478	99.484	834.304	3.49%	34.08%
13.0	3904.241	97.820	932.124	3.43%	38.07%
14.0	3517.553	94.998	1027.122	3.33%	41.95%
15.0	3184.341	92.007	1119.129	3.23%	45.71%
16.0	2858.297	88.542	1207.67	3.11%	49.33%
17.0	2570.732	84.545	1292.215	2.97%	52.78%
18.0	2317.476	80.596	1372.811	2.83%	56.07%
19.0	2094.432	76.758	1449.569	2.69%	59.21%
20.0	1895.456	73.026	1522.595	2.56%	62.19%
21.0	1712.646	69.283	1591.878	2.43%	65.02%
22.0	1563.121	65.828	1657.706	2.31%	67.71%
23.0	1409.500	62.374	1720.08	2.19%	70.26%
24.0	1283.969	58.889	1778.969	2.07%	72.66%
25.0	1211.050	56.731	1835.7	1.99%	74.98%
26.0	1144.539	55.604	1891.304	1.95%	77.25%
27.0	1071.679	54.220	1945.524	1.90%	79.47%
28.0	994.575	52.313	1997.837	1.84%	81.60%
29.0	909.425	49.814	2047.651	1.75%	83.64%
30.0	806.030	46.317	2093.968	1.63%	85.53%
31.0	711.963	42.244	2136.212	1.48%	87.26%
32.0	618.466	38.115	2174.327	1.34%	88.81%
33.0	520.316	33.549	2207.876	1.18%	90.18%
34.0	428.370	28.710	2236.586	1.01%	91.36%
35.0	337.880	23.797	2260.383	0.83%	92.33%
36.0	278.743	19.633	2280.016	0.69%	93.13%
37.0	214.975	16.102	2296.119	0.56%	93.79%

$\gamma(^{\circ})$	Average I(cd)	Zonal F(lm)	Sum F(lm)	Eff Flux(%)	Eff Sum(%)
38.0	162.949	12.615	2308.733	0.44%	94.30%
39.0	97.915	8.904	2317.637	0.31%	94.67%
40.0	74.748	6.022	2323.659	0.21%	94.91%
41.0	65.794	5.005	2328.664	0.18%	95.12%
42.0	60.644	4.594	2333.257	0.16%	95.31%
43.0	56.767	4.349	2337.607	0.15%	95.48%
44.0	53.819	4.174	2341.78	0.15%	95.65%
45.0	51.653	4.053	2345.834	0.14%	95.82%
46.0	49.876	3.971	2349.804	0.14%	95.98%
47.0	48.376	3.908	2353.712	0.14%	96.14%
48.0	47.352	3.870	2357.582	0.14%	96.30%
49.0	46.321	3.847	2361.429	0.13%	96.46%
50.0	45.274	3.819	2365.248	0.13%	96.61%
51.0	44.316	3.790	2369.038	0.13%	96.77%
52.0	43.409	3.764	2372.802	0.13%	96.92%
53.0	42.370	3.731	2376.534	0.13%	97.07%
54.0	41.141	3.681	2380.215	0.13%	97.22%
55.0	39.905	3.618	2383.832	0.13%	97.37%
56.0	38.347	3.536	2387.368	0.12%	97.52%
57.0	36.657	3.429	2390.798	0.12%	97.66%
58.0	34.565	3.294	2394.091	0.12%	97.79%
59.0	32.378	3.130	2397.221	0.11%	97.92%
60.0	30.051	2.949	2400.17	0.10%	98.04%
61.0	27.791	2.760	2402.931	0.10%	98.15%
62.0	25.940	2.589	2405.52	0.09%	98.26%
63.0	23.950	2.426	2407.946	0.09%	98.36%
64.0	22.385	2.274	2410.22	0.08%	98.45%
65.0	20.995	2.147	2412.367	0.08%	98.54%
66.0	19.671	2.029	2414.396	0.07%	98.62%
67.0	18.354	1.912	2416.308	0.07%	98.70%
68.0	17.293	1.806	2418.113	0.06%	98.77%
69.0	16.489	1.723	2419.837	0.06%	98.84%
70.0	15.779	1.657	2421.494	0.06%	98.91%
71.0	15.194	1.601	2423.095	0.06%	98.97%
72.0	14.784	1.559	2424.654	0.05%	99.04%
73.0	14.418	1.527	2426.181	0.05%	99.10%
74.0	14.060	1.497	2427.678	0.05%	99.16%
75.0	13.753	1.470	2429.147	0.05%	99.22%

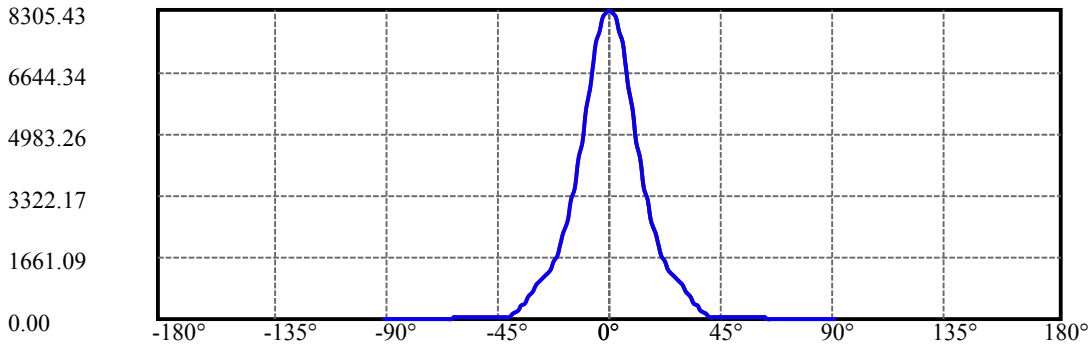
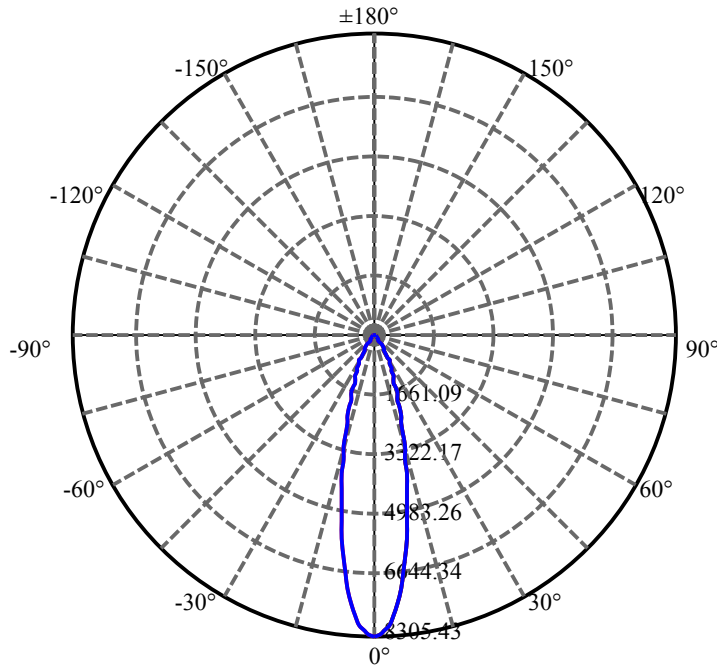
$\gamma(^{\circ})$	Average I(cd)	Zonal F(lm)	Sum F(lm)	Eff Flux(%)	Eff Sum(%)
76.0	13.431	1.443	2430.59	0.05%	99.28%
77.0	13.131	1.416	2432.007	0.05%	99.34%
78.0	12.860	1.391	2433.398	0.05%	99.40%
79.0	12.531	1.364	2434.762	0.05%	99.45%
80.0	12.239	1.335	2436.098	0.05%	99.51%
81.0	11.968	1.309	2437.407	0.05%	99.56%
82.0	11.690	1.283	2438.69	0.05%	99.61%
83.0	11.427	1.257	2439.946	0.04%	99.66%
84.0	11.207	1.233	2441.179	0.04%	99.71%
85.0	11.002	1.212	2442.391	0.04%	99.76%
86.0	10.783	1.191	2443.582	0.04%	99.81%
87.0	10.629	1.172	2444.754	0.04%	99.86%
88.0	10.490	1.157	2445.911	0.04%	99.91%
89.0	10.395	1.145	2447.056	0.04%	99.95%
90.0	10.322	1.136	2448.191	0.04%	100.00%

ZONAL LUMEN SUMMARY

Zone	Lumens	%Lamp	%Fixt
0-30	2093.97	73.47%	85.53%
0-40	2323.66	81.53%	94.91%
0-60	2400.17	84.22%	98.04%
0-90	2447.06	85.86%	99.95%
0-120	2447.06	85.86%	99.95%
0-180	2448.19	85.90%	100.00%
60-90	46.89	1.65%	1.92%
90-120	0.00	0.00%	0.00%
90-130	0.00	0.00%	0.00%
90-150	0.00	0.00%	0.00%
90-180	0.00	0.00%	0.00%
0-27.25	1958.55	68.72%	80.00%

ZONAL LUMEN SUMMARY

0-10	634.96
10-20	887.63
20-30	571.37
30-40	229.69
40-50	41.59
50-60	34.92
60-70	21.32
70-80	14.60
80-90	10.96
90-100	0.00
100-110	0.00
110-120	0.00
120-130	0.00
130-140	0.00
140-150	0.00
150-160	0.00
160-170	0.00
170-180	0.00



C0(Max): —————

C0/C180: —————

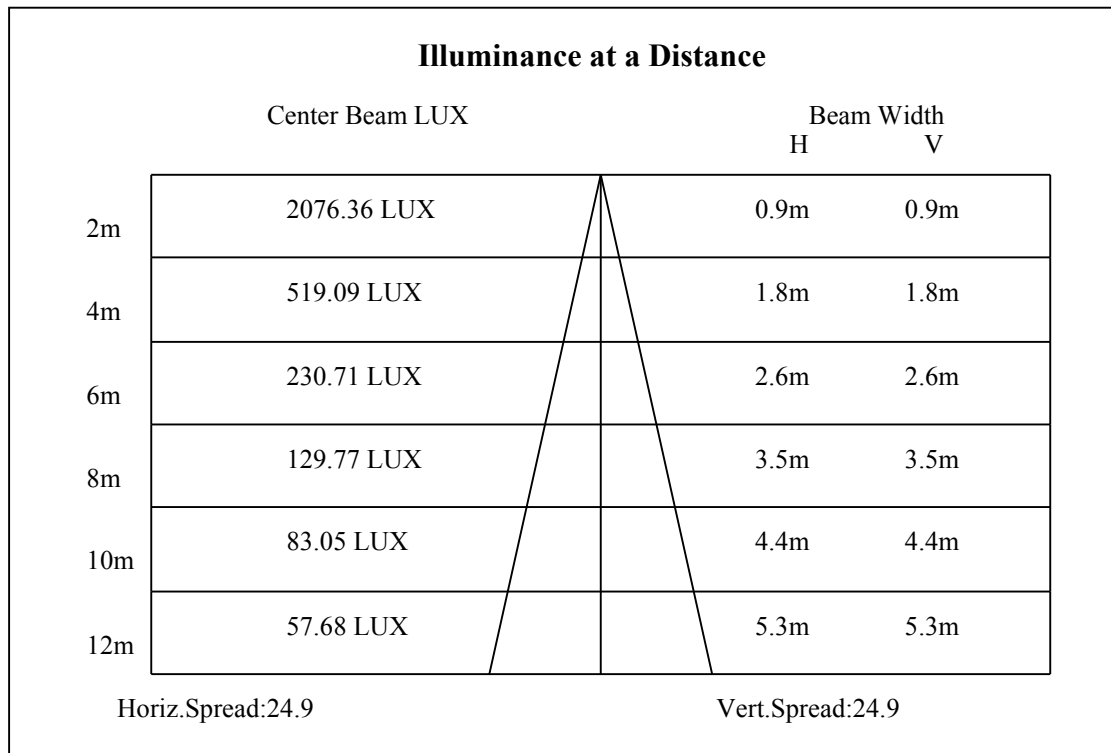
C90/C270: —————

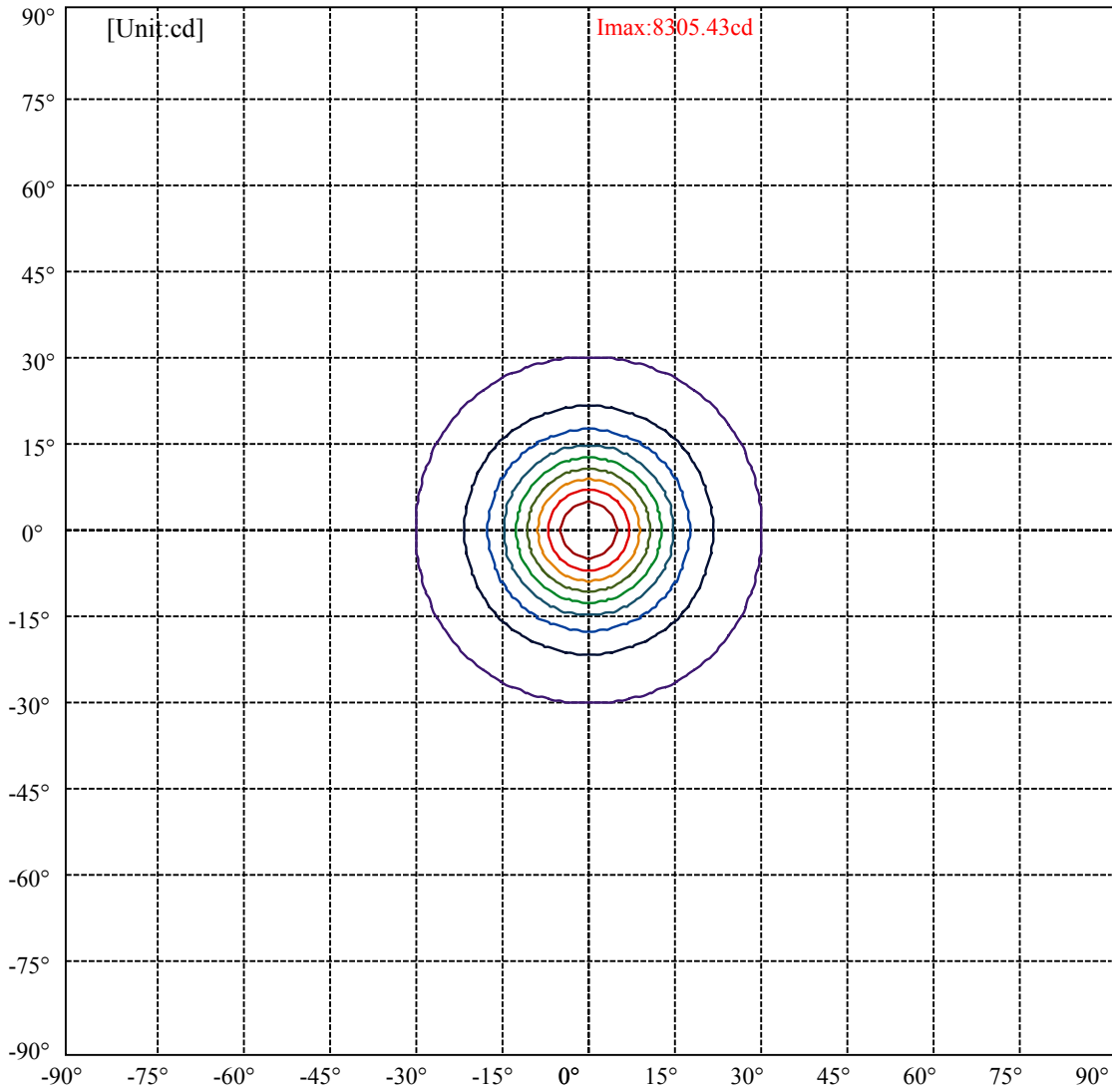
Field angle(10%Imax):C0/180Left:29.8 Right:29.8

:C90/270Left:29.8 Right:29.8

Beam Angle(50%Imax):C0/180Left:12.4 Right:12.4

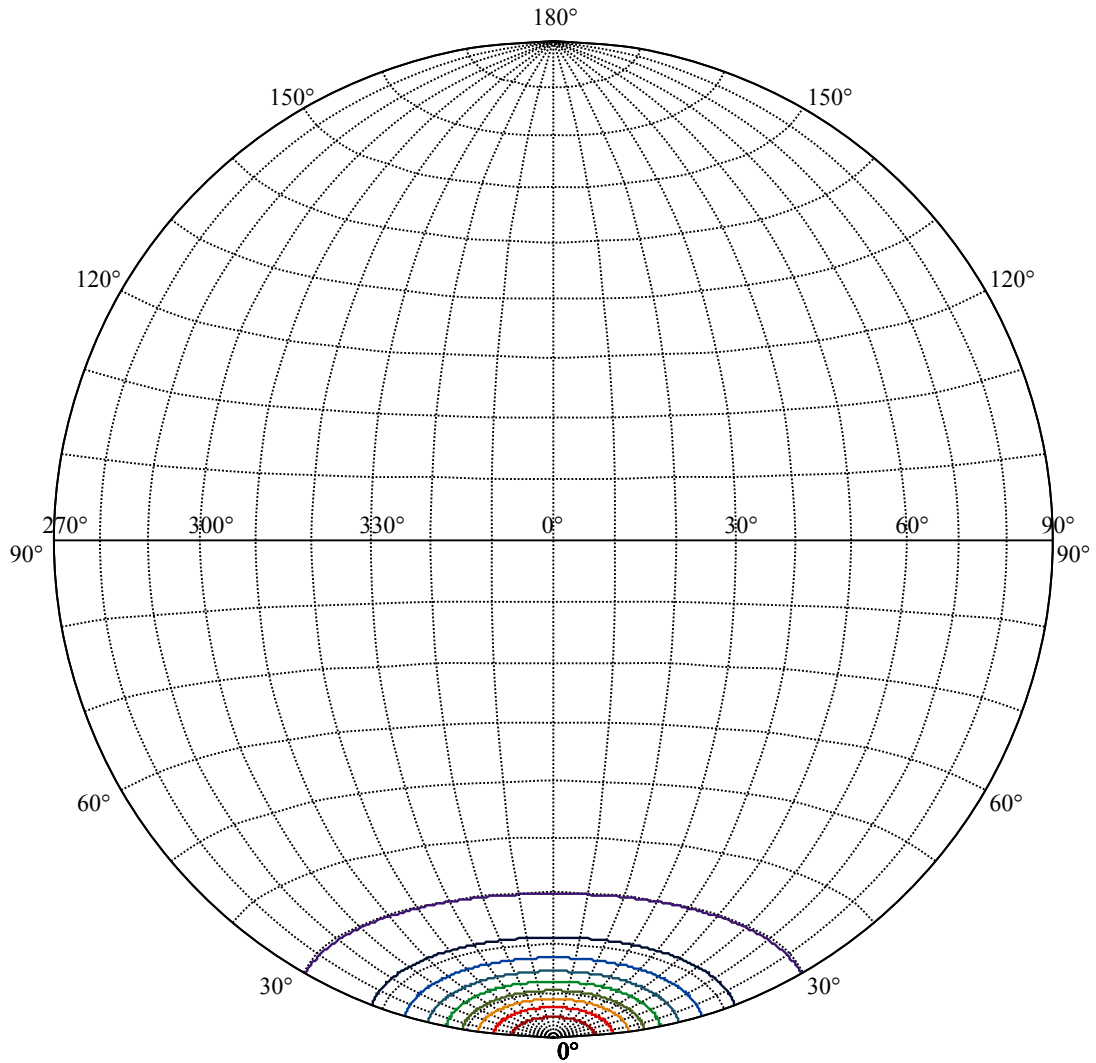
:C90/270Left:12.4 Right:12.4





(10%Imax) 830.543	—
(20%Imax) 1661.09	—
(30%Imax) 2491.63	—
(40%Imax) 3322.17	—
(50%Imax) 4152.71	—
(60%Imax) 4983.26	—
(70%Imax) 5813.8	—
(80%Imax) 6644.34	—
(90%Imax) 7474.88	—





House

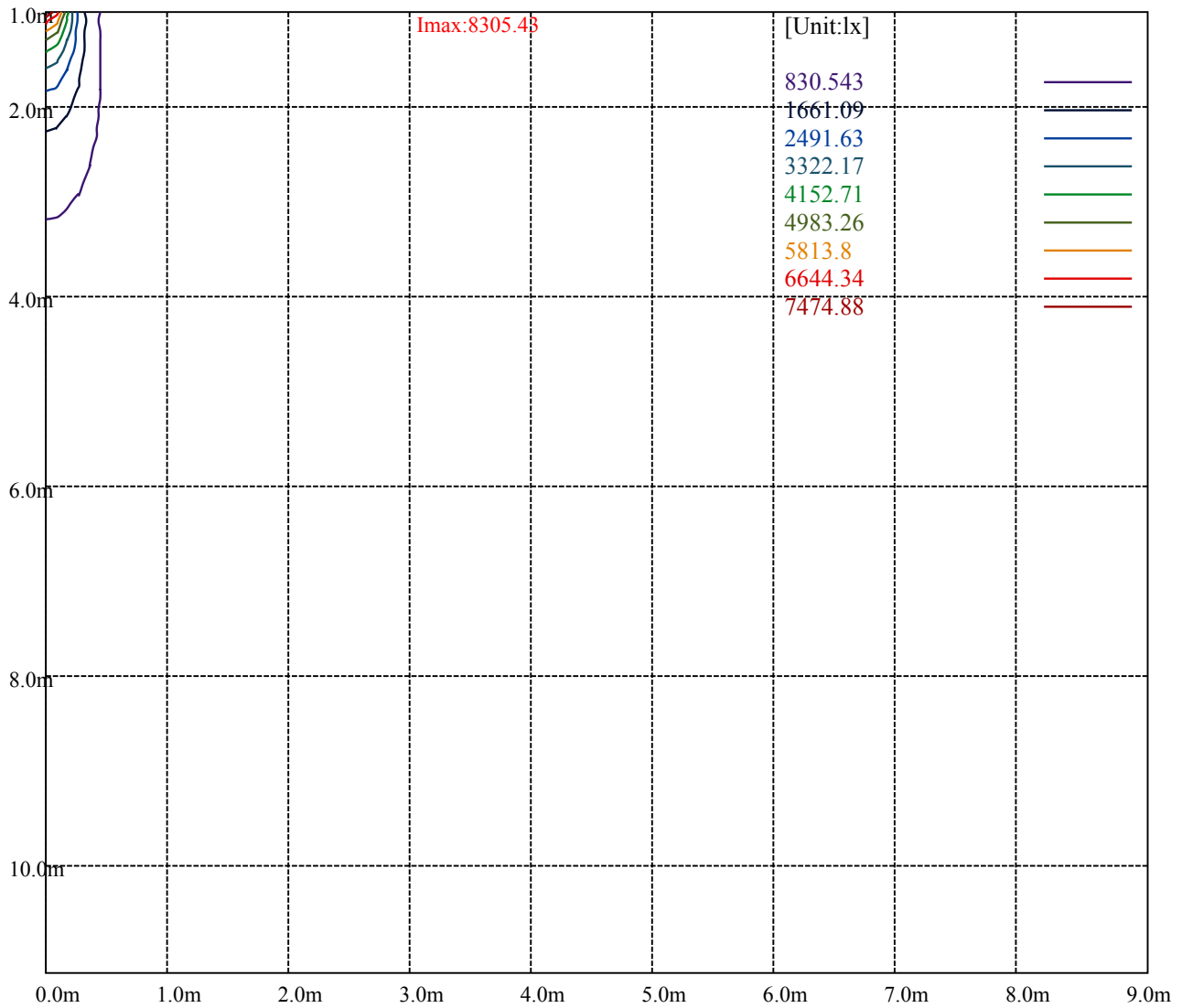
[Unit:cd]

Road

**Imax:8305.43**

(10%Imax) 830.543	—
(20%Imax) 1661.09	—
(30%Imax) 2491.63	—
(40%Imax) 3322.17	—
(50%Imax) 4152.71	—
(60%Imax) 4983.26	—
(70%Imax) 5813.8	—
(80%Imax) 6644.34	—
(90%Imax) 7474.88	—





Luminance Table

$\gamma$	45	50	55	60	65	70	75	80	85
C0	0	0	0	0	0	0	0	0	0
C45	0	0	0	0	0	0	0	0	0
C90	0	0	0	0	0	0	0	0	0

L(Hor)(65)	L(Ver)(65)	L45(65)	L(Hor)(75)	L(Ver)(75)	L45(75)	L(Hor)(85)	L(Ver)(85)	L45(85)
0	0	0	0	0	0	0	0	0

Glare Table

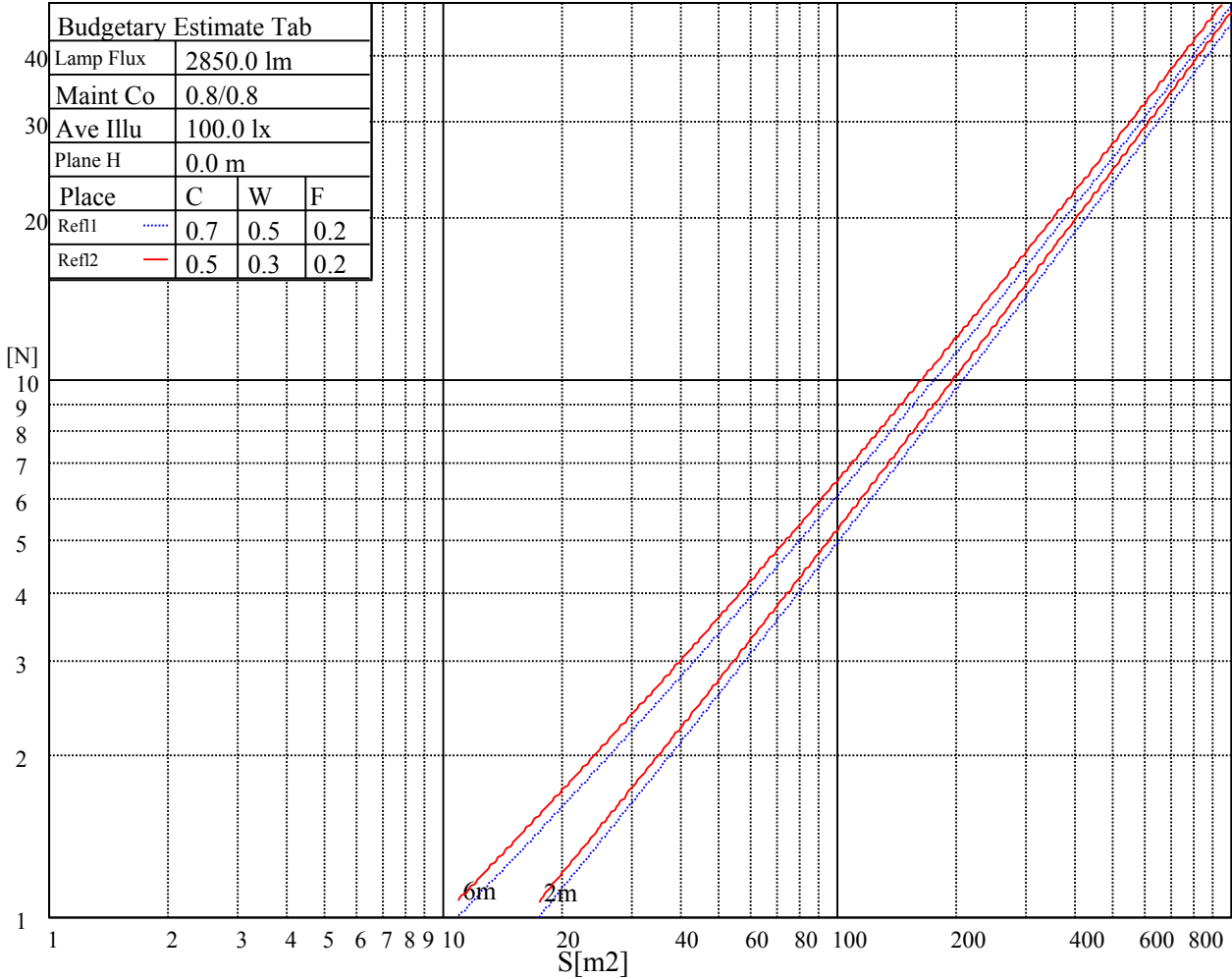
Glare	Quality	Service Values Illuminance(lx)							
1.15	A	2000	1000	500	<=300				
1.5	B		2000	1000	500	<=300			
1.85	C			2000	1000	500	<=300		
2.2	D				2000	1000	500	<=300	
2.55	E					2000	1000	500	<=300
		a	b	c	d	e	f	g	h

Luminance Limiting Curve

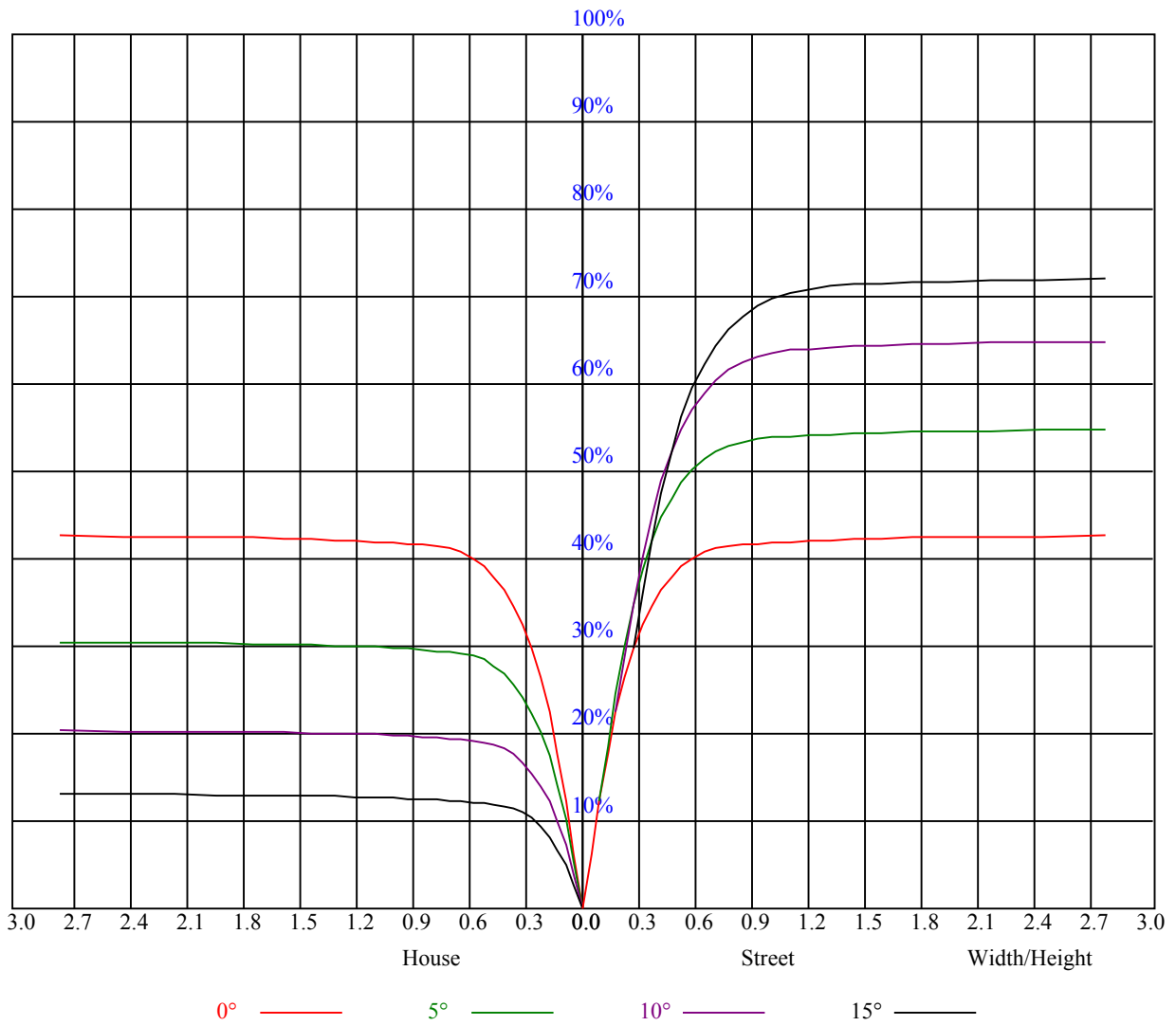


Illumination assessment according UGR											
Rf of Ceiling	70	70	50	50	30	70	70	50	50	30	
Rf of Wall	50	30	50	30	30	50	30	50	30	30	
Rf of Floor	20	20	20	20	20	20	20	20	20	20	
Room dimensions		Viewed crosswise					Viewed endwise				
X	Y										
2H	2H	非数字	非数字	非数字	非数字	非数字	非数字	非数字	非数字	非数字	
	3H	非数字	非数字	非数字	非数字	非数字	非数字	非数字	非数字	非数字	
	4H	非数字	非数字	非数字	非数字	非数字	非数字	非数字	非数字	非数字	
	6H	非数字	非数字	非数字	非数字	非数字	非数字	非数字	非数字	非数字	
	8H	非数字	非数字	非数字	非数字	非数字	非数字	非数字	非数字	非数字	
	12H	非数字	非数字	非数字	非数字	非数字	非数字	非数字	非数字	非数字	
4H	2H	非数字	非数字	非数字	非数字	非数字	非数字	非数字	非数字	非数字	
	3H	非数字	非数字	非数字	非数字	非数字	非数字	非数字	非数字	非数字	
	4H	非数字	非数字	非数字	非数字	非数字	非数字	非数字	非数字	非数字	
	6H	非数字	非数字	非数字	非数字	非数字	非数字	非数字	非数字	非数字	
	8H	非数字	非数字	非数字	非数字	非数字	非数字	非数字	非数字	非数字	
8H	12H	非数字	非数字	非数字	非数字	非数字	非数字	非数字	非数字	非数字	
	4H	非数字	非数字	非数字	非数字	非数字	非数字	非数字	非数字	非数字	
	6H	非数字	非数字	非数字	非数字	非数字	非数字	非数字	非数字	非数字	
	8H	非数字	非数字	非数字	非数字	非数字	非数字	非数字	非数字	非数字	
12H	12H	非数字	非数字	非数字	非数字	非数字	非数字	非数字	非数字	非数字	
	4H	非数字	非数字	非数字	非数字	非数字	非数字	非数字	非数字	非数字	
	6H	非数字	非数字	非数字	非数字	非数字	非数字	非数字	非数字	非数字	
	8H	非数字	非数字	非数字	非数字	非数字	非数字	非数字	非数字	非数字	
Variation with the observer position at spacings:											
S = 1.0H		非数字/非数字					非数字/非数字				
S = 1.5H		非数字/非数字					非数字/非数字				
S = 2.0H		非数字/非数字					非数字/非数字				
Standard tables:		BK0					BK0				
Uncorrected UGR		负无穷大					负无穷大				

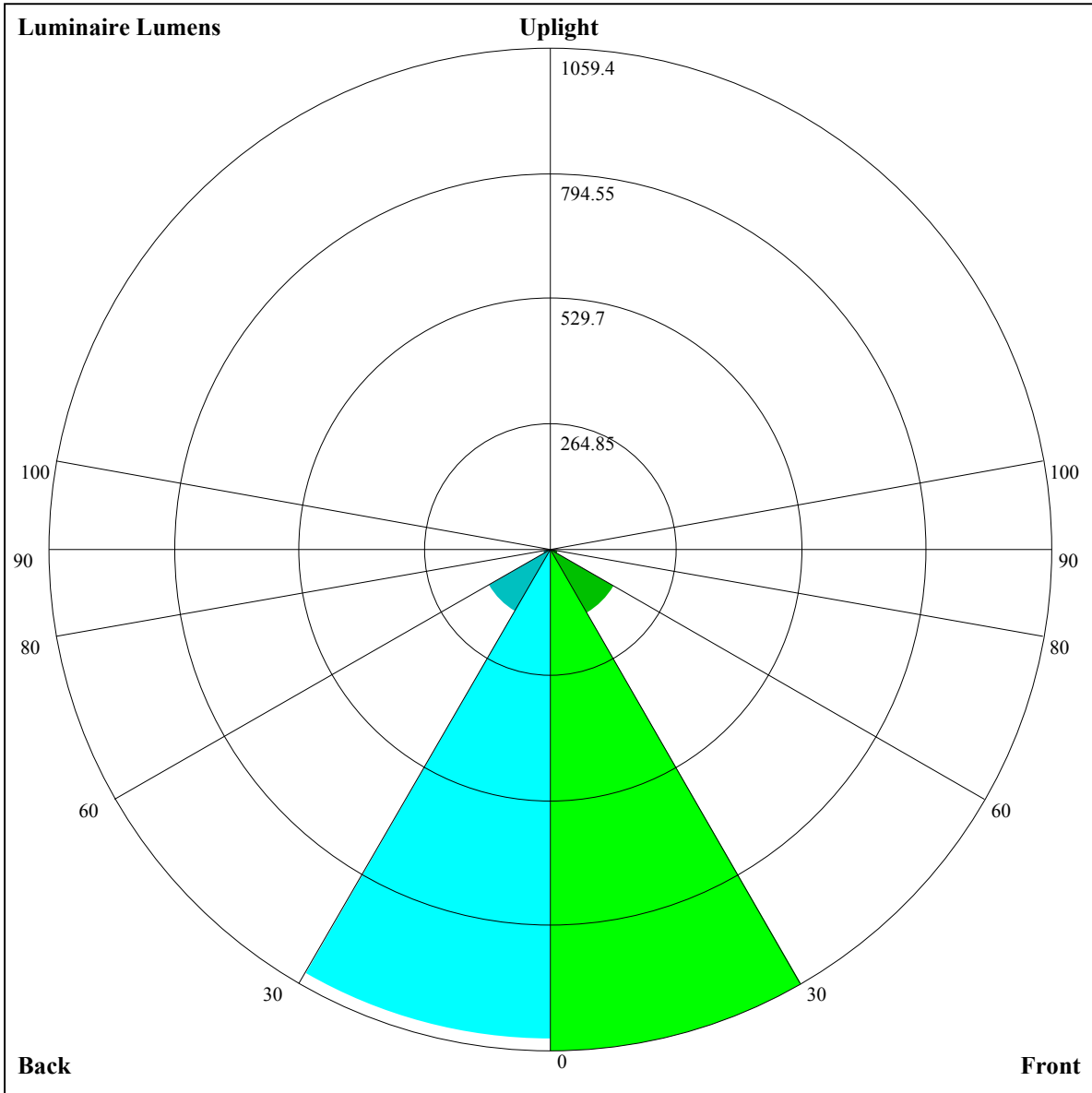
UGR calculation is based on CIE Publ. 117 ,S/H = 0.25



RHOCC	80			70			50			30			10			0
RHOW	50	30	10	50	30	10	50	30	10	50	30	10	50	30	10	0
RCR	COEFFICIENTS OF UTILIZATION RHOF=20 CU															
0	1.02	1.02	1.02	1.00	1.00	1.00	0.95	0.95	0.95	0.91	0.91	0.91	0.88	0.88	0.88	0.86
1	0.96	0.94	0.92	0.94	0.92	0.91	0.91	0.89	0.88	0.87	0.86	0.85	0.84	0.84	0.83	0.81
2	0.90	0.87	0.85	0.89	0.86	0.84	0.86	0.84	0.82	0.84	0.82	0.80	0.81	0.80	0.79	0.77
3	0.85	0.82	0.79	0.84	0.81	0.78	0.82	0.79	0.77	0.80	0.78	0.76	0.78	0.76	0.75	0.73
4	0.81	0.77	0.74	0.80	0.77	0.74	0.78	0.75	0.73	0.77	0.74	0.72	0.75	0.73	0.71	0.70
5	0.77	0.73	0.70	0.77	0.73	0.70	0.75	0.72	0.69	0.74	0.71	0.69	0.73	0.70	0.68	0.67
6	0.74	0.70	0.67	0.73	0.69	0.66	0.72	0.69	0.66	0.71	0.68	0.66	0.70	0.67	0.65	0.64
7	0.71	0.67	0.64	0.70	0.66	0.63	0.69	0.66	0.63	0.68	0.65	0.63	0.67	0.65	0.62	0.61
8	0.68	0.64	0.61	0.68	0.64	0.61	0.67	0.63	0.61	0.66	0.63	0.60	0.65	0.62	0.60	0.59
9	0.65	0.61	0.58	0.65	0.61	0.58	0.64	0.61	0.58	0.64	0.60	0.58	0.63	0.60	0.58	0.57
10	0.63	0.59	0.56	0.63	0.59	0.56	0.62	0.59	0.56	0.62	0.58	0.56	0.61	0.58	0.56	0.55







Luminaire Lumens:

FL=1059.4,FM=154.72,FH=18.3,FVH=6.08

BL=1034.9,BM=152.62,BH=17.7,BVH=6.03

UL=0,UH=0

BUG Rating:B3-U0-G0

Intensity data(cd)

C/γ(°)	0.0	1.0	2.0	3.0	4.0	5.0	6.0	7.0	8.0
0.0	8328.98	8289.77	8190.87	8014.71	7715.66	7408.42	7073.09	6680.40	6159.55
45.0	8262.85	8334.25	8347.12	8295.04	8165.12	7905.28	7630.81	7318.30	6965.41
90.0	8338.93	8336.00	8266.95	8080.26	7857.87	7575.80	7171.41	6785.16	6374.91
135.0	8290.94	8327.81	8302.65	8210.18	7991.89	7753.12	7442.36	7008.13	6609.59
180.0	8328.98	8301.48	8208.42	8044.56	7749.61	7462.85	7021.59	6609.00	6181.79
225.0	8262.85	8120.64	7864.90	7586.33	7253.92	6877.62	6344.48	5890.93	5440.31
270.0	8338.93	8270.46	8131.76	7930.44	7596.86	7284.35	6915.08	6503.08	5965.84
315.0	8290.94	8162.19	7979.60	7741.41	7438.85	7115.22	6628.90	6201.69	5663.87
360.0	8328.98	8289.77	8190.87	8014.71	7715.66	7408.42	7073.09	6680.40	6159.55
C/γ(°)	9.0	10.0	11.0	12.0	13.0	14.0	15.0	16.0	17.0
0.0	5724.73	5284.64	4752.09	4348.28	3861.37	3507.31	3181.34	2879.95	2548.71
45.0	6455.68	6027.88	5573.16	5128.97	4589.98	4182.08	3799.34	3358.66	3040.89
90.0	5936.58	5371.25	4915.95	4482.30	4087.86	3630.21	3297.22	2987.63	2647.03
135.0	6078.21	5629.34	5185.74	4638.55	4231.24	3849.67	3496.19	3090.05	2803.29
180.0	5623.49	5165.84	4723.41	4306.14	3825.09	3473.95	3143.89	2846.59	2536.42
225.0	4889.03	4466.50	4077.91	3714.48	3293.70	2985.88	2647.03	2401.82	2175.34
270.0	5530.43	5096.78	4564.23	4164.52	3785.88	3353.98	3037.38	2696.78	2452.74
315.0	5227.87	4807.68	4305.56	3924.58	3558.81	3157.35	2872.34	2604.89	2361.44
360.0	5724.73	5284.64	4752.09	4348.28	3861.37	3507.31	3181.34	2879.95	2548.71
C/γ(°)	18.0	19.0	20.0	21.0	22.0	23.0	24.0	25.0	26.0
0.0	2311.70	2098.68	1906.14	1694.87	1549.15	1425.08	1164.31	1164.31	1128.84
45.0	2757.05	2441.62	2217.48	1968.76	1793.19	1641.61	1508.18	1362.46	1262.39
90.0	2401.24	2180.02	1933.64	1762.17	1613.52	1453.17	1277.60	1165.83	1165.83
135.0	2548.13	2312.28	2101.02	1862.83	1700.72	1530.42	1415.13	1312.72	1207.38
180.0	2294.14	2070.58	1882.73	1691.94	1546.81	1404.01	1308.04	1219.08	1134.22
225.0	1922.52	1752.81	1604.75	1483.60	1353.68	1154.12	1154.12	1120.30	1040.76
270.0	2219.23	2005.62	1791.43	1649.22	1513.45	1401.67	1286.38	1203.87	1140.08
315.0	2085.80	1893.85	1726.47	1587.77	1434.44	1265.90	1157.98	1139.84	1076.81
360.0	2311.70	2098.68	1906.14	1694.87	1549.15	1425.08	1164.31	1164.31	1128.84
C/γ(°)	27.0	28.0	29.0	30.0	31.0	32.0	33.0	34.0	35.0
0.0	1066.69	977.15	893.64	782.21	690.86	602.37	510.26	400.88	324.51
45.0	1180.46	1108.47	1025.96	944.03	855.07	743.29	652.00	561.87	451.85
90.0	1082.37	1017.30	939.11	856.83	744.46	655.22	566.09	476.14	369.28
135.0	1133.05	1071.02	984.41	900.72	813.52	723.98	613.96	523.83	433.71
180.0	1072.78	1009.57	928.23	815.28	721.64	629.18	538.47	428.44	343.59
225.0	967.32	883.16	793.21	675.53	583.24	491.94	383.73	305.96	218.93
270.0	1080.97	986.75	899.55	779.58	684.19	589.38	474.09	388.06	306.72
315.0	989.79	903.18	811.30	694.08	602.72	512.36	423.94	341.77	254.46
360.0	1066.69	977.15	893.64	782.21	690.86	602.37	510.26	400.88	324.51
C/γ(°)	36.0	37.0	38.0	39.0	40.0	41.0	42.0	43.0	44.0
0.0	254.81	192.19	125.94	90.30	74.32	67.07	61.98	58.29	54.02
45.0	366.99	309.06	309.06	143.61	97.73	75.55	66.60	61.74	58.41
90.0	292.73	208.63	151.28	108.68	78.83	70.75	65.49	60.04	55.65
135.0	352.36	295.01	295.01	130.45	84.27	70.23	65.31	59.93	55.89
180.0	306.13	306.13	131.62	90.89	66.83	61.74	57.00	53.37	51.68
225.0	159.30	113.77	83.28	66.13	60.63	56.71	53.02	51.15	49.45
270.0	306.72	157.31	111.78	81.52	69.29	63.20	59.05	55.54	53.49
315.0	190.90	137.70	95.63	71.75	66.07	61.10	56.71	54.07	51.97
360.0	254.81	192.19	125.94	90.30	74.32	67.07	61.98	58.29	54.02

Intensity data(cd)

C/γ(°)	45.0	46.0	47.0	48.0	49.0	50.0	51.0	52.0	53.0
0.0	51.85	50.10	48.22	47.29	46.23	44.89	44.65	43.83	42.66
45.0	54.84	52.44	50.74	49.33	48.05	47.34	46.12	45.30	44.71
90.0	53.43	51.32	48.98	47.81	46.76	45.53	44.36	43.60	42.31
135.0	53.20	51.21	49.51	48.28	47.52	45.88	44.83	44.30	43.37
180.0	50.21	48.34	47.23	46.76	45.88	44.77	43.95	43.25	42.08
225.0	48.16	46.94	45.94	44.95	43.83	43.19	42.02	40.73	39.44
270.0	51.38	49.98	48.52	47.58	46.41	45.35	44.54	43.25	42.14
315.0	50.15	48.69	47.87	46.82	45.88	45.24	44.07	43.01	42.25
360.0	51.85	50.10	48.22	47.29	46.23	44.89	44.65	43.83	42.66
C/γ(°)	54.0	55.0	56.0	57.0	58.0	59.0	60.0	61.0	62.0
0.0	41.67	40.50	39.09	37.69	35.35	33.12	30.67	28.15	26.39
45.0	43.60	42.78	41.79	40.38	38.62	37.16	34.94	32.60	30.49
90.0	41.38	40.32	38.57	37.22	35.41	33.30	30.90	28.62	26.45
135.0	42.08	41.08	39.74	37.98	36.46	33.88	31.84	29.67	27.10
180.0	40.85	39.62	37.86	36.23	34.06	31.72	29.38	26.98	25.52
225.0	38.16	36.40	34.24	32.30	30.43	27.39	25.46	23.99	22.30
270.0	40.67	39.15	37.81	35.82	33.36	31.49	28.97	26.28	24.87
315.0	40.73	39.39	37.69	35.64	32.83	30.96	28.27	26.04	24.40
360.0	41.67	40.50	39.09	37.69	35.35	33.12	30.67	28.15	26.39
C/γ(°)	63.0	64.0	65.0	66.0	67.0	68.0	69.0	70.0	71.0
0.0	24.46	22.71	21.42	20.31	18.49	17.56	16.68	15.98	15.27
45.0	27.56	25.98	24.23	22.47	21.30	19.43	18.32	17.38	16.33
90.0	24.99	23.12	21.54	20.42	18.79	17.67	16.80	15.86	15.33
135.0	25.22	23.64	22.12	20.95	19.14	17.91	17.09	16.09	15.45
180.0	23.23	21.77	20.66	19.25	17.79	16.97	16.15	15.45	15.04
225.0	20.72	19.49	17.91	17.03	16.27	15.45	15.04	14.69	14.22
270.0	22.88	21.30	20.19	18.55	17.50	16.80	15.98	15.39	14.98
315.0	22.53	21.07	19.90	18.38	17.56	16.56	15.86	15.39	14.92
360.0	24.46	22.71	21.42	20.31	18.49	17.56	16.68	15.98	15.27
C/γ(°)	72.0	73.0	74.0	75.0	76.0	77.0	78.0	79.0	80.0
0.0	14.86	14.51	14.10	13.75	13.40	13.11	12.87	12.58	12.23
45.0	15.68	15.27	14.81	14.46	14.10	13.81	13.46	13.11	12.82
90.0	14.92	14.51	14.16	13.87	13.58	13.23	12.99	12.64	12.35
135.0	15.04	14.63	14.28	13.99	13.64	13.40	13.11	12.76	12.47
180.0	14.63	14.28	13.99	13.69	13.34	13.05	12.82	12.47	12.17
225.0	13.99	13.64	13.40	13.11	12.82	12.52	12.29	12.00	11.76
270.0	14.63	14.28	13.93	13.64	13.34	13.05	12.76	12.41	12.11
315.0	14.51	14.22	13.81	13.52	13.23	12.87	12.58	12.29	12.00
360.0	14.86	14.51	14.10	13.75	13.40	13.11	12.87	12.58	12.23
C/γ(°)	81.0	82.0	83.0	84.0	85.0	86.0	87.0	88.0	89.0
0.0	11.94	11.65	11.41	11.18	11.00	10.77	10.65	10.42	10.65
45.0	12.52	12.17	11.82	11.59	11.35	11.12	10.94	10.71	10.53
90.0	12.06	11.76	11.53	11.29	11.12	10.94	10.77	10.59	10.53
135.0	12.23	11.88	11.59	11.35	11.18	11.00	10.83	10.65	10.48
180.0	11.88	11.59	11.29	11.18	10.94	10.71	10.48	10.48	10.18
225.0	11.47	11.29	11.12	10.83	10.59	10.48	10.48	10.24	10.30
270.0	11.88	11.65	11.35	11.18	10.94	10.65	10.48	10.48	10.24
315.0	11.76	11.53	11.29	11.06	10.89	10.59	10.42	10.36	10.24
360.0	11.94	11.65	11.41	11.18	11.00	10.77	10.65	10.42	10.65

Intensity data(cd)

C/ $\gamma$ (°)	90.0
0.0	10.18
45.0	10.53
90.0	10.30
135.0	10.24
180.0	10.30
225.0	10.24
270.0	10.36
315.0	10.42
360.0	10.18